

# ELECTRIC BALL VALVE SÄHKÖINEN PALOVENTTIILI

## Description

Ball valve with supervisory limit switch. Female-female connections. Chrome-plated and not chrome-plated brass. Standard port. Steel lever handle.

## Technical data

**Size:** DN15 – DN50.

**Max. working pressure:** 35 Bar – 3,5 MPa at 20°C with water and no gas.

**Min. working temperature:** -20°C with 50% glycol solutions.

**Max. working pressure:** 12 bar at 20°C with liquid hydrocarbon.

**Max. operating pressure (MOP):** 0,5 Mpa (5bar) with gas.

## Product specifications

Suitable for plumbing, as and liquid hydrocarbon systems.

Connections: Fx F (Rc EN10226 – "BSP").

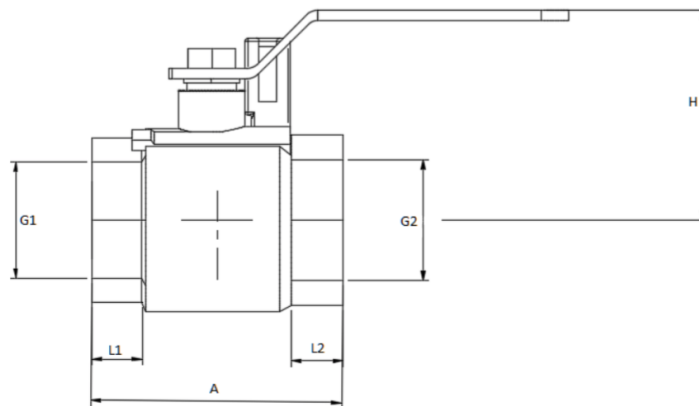
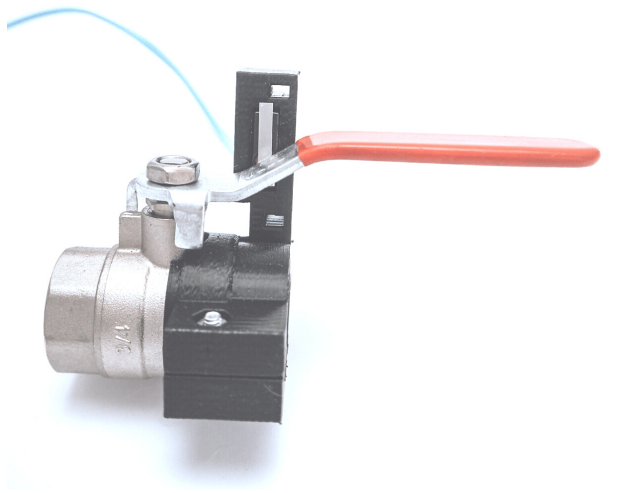
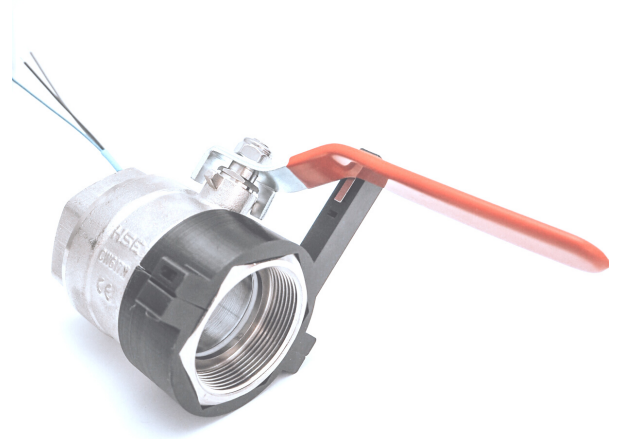
Standard port.

UNI EN 12165 CW617N brass valve.

Stem with double O-Ring.

Nut with anti-corrosion coating, with guarantee seal and hologram.

Steel lever handle with PVC anti-corrosion coating.



## General notes:

- Warning: Piping systems must always be depressurized and drained before attempting disassembly and/or removal of any components.
- JR Engineering reserves the right to change this document without notice and without incurring in any obligations.

# ELECTRIC BALL VALVE

## SÄHKÖINEN PALOVENTTIILI

### Dimensions

Size	DN	A	L1	L2	G1*	G2*	H	Kv	Weight
½"	15	52	13	14	1/2	1/2	52	10,2	204
¾"	20	58	12	13	3/4	3/4	54.5	18,5	280
1"	25	66	14	14	1	1	59.5	36,3	411
1 ¼"	32	81	17	17	1 1/4	1 1/4	69	73,5	638
1 ½"	40	90	17	17	1 1/2	1 1/2	74	105	934
2"	50	102.5	18.5	18.5	2	2	90.5	158	1335

\* G1-G2 are presented i inches.

### Limit Switch Product and Material Specifications

**Temperature Rating:** -40° to +85°C / +105°C

**Degree of Protection:** IP67

**RoHS Compliant:** Yes

**UL File Number:** E314201

**Case:** PET / PBT

**Actuator button:** PBT (UL 94 V-0) 120°C / POM (UL 94 HB) 85°

**Contacts:** AuAgPt (Crosspoint), AdNi.

**Terminals:** CuZn (silver plated)

**Auxiliary actuator:** Stainless steel or plastic.

Electrical Ratings and Operating Life				
Switch Series	Nominal Load*	Operation Cycles*	Nominal Load**	Operation Cycles**
DC1	6A, 250V	10,000	5A 125/250 VAC, 1A 48VDC	6,000

\* According to EN61058-1

\*\*According to UL1054

### Circuit Specifications

**Black:** Common

**Black-Grey:** NC

**Black-Blue:** NO

### General notes:

- Warning: Piping systems must always be depressurized and drained before attempting disassembly and/or removal of any components.
- JR Engineering reserves the right to change this document without notice and without incurring in any obligations.